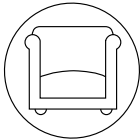


Elkie

An enticing bouclé collection for contract upholstery,
featuring natural, unrefined texture.

Upholstery
FR Contract Fabric

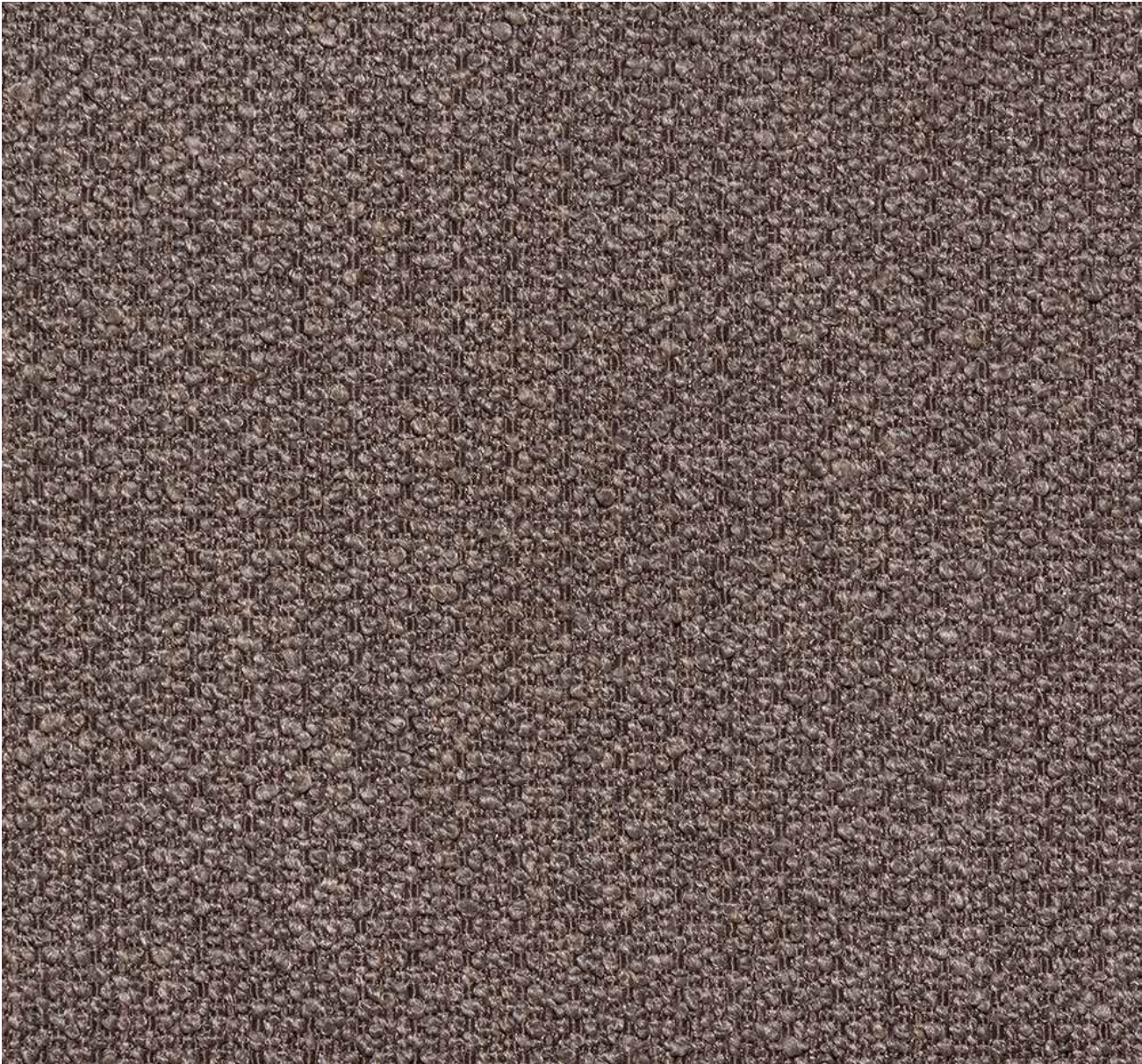


Elkie

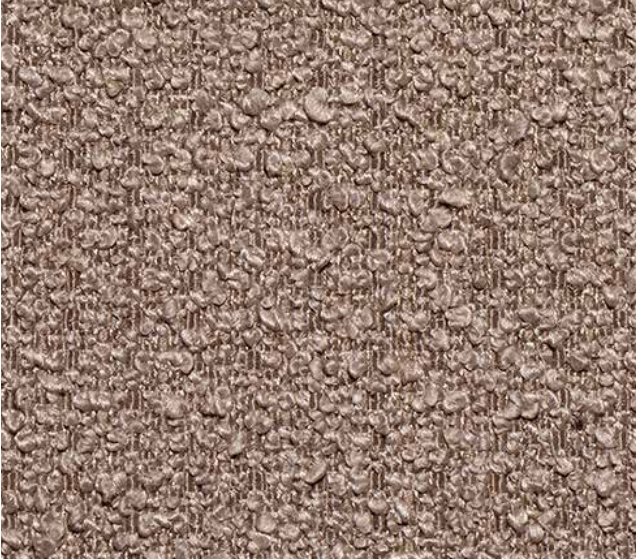
Composition Polyester/Acrylic Blend with FR Backcoating	
Width Approx 138cm (54")	
Weight 680g/m ² (± 5%)	
End Use Upholstery	
Flammability Ratings BS 7176: Medium Hazard BS 5852: 2006 Ignition Source 5 EN1021-1/2 NFPA 260 USA CAL TB 117 IMO: FTP 2010 Part 8	
Product Performance Colour Fastness to Light Grade 5 Colour Fastness to Rubbing Wet>4 Dry>4	Abrasion <div>50,000+ Martindale Rubs</div> <div>50,000 Wyzenbeek Rubs</div>
Care Instructions <ul style="list-style-type: none">• Vacuum and wipe clean routinely with a microfibre cloth lightly dampened with cold water only.• Soak up spillages as soon as possible with an absorbent dry cloth to prevent staining.• Do not steam clean - heat seals in stains.• Do not use bleach.• Do not tumble dry.• Do not dry clean.• Do not fully immerse in water.• Do not apply solvents, alcohol or any other chemical cleaners.	

Note: Elkie is not suitable for piping.





Elkie 971 Nickel LRV 15.8



Elkie 925 Putty LRV 29.42



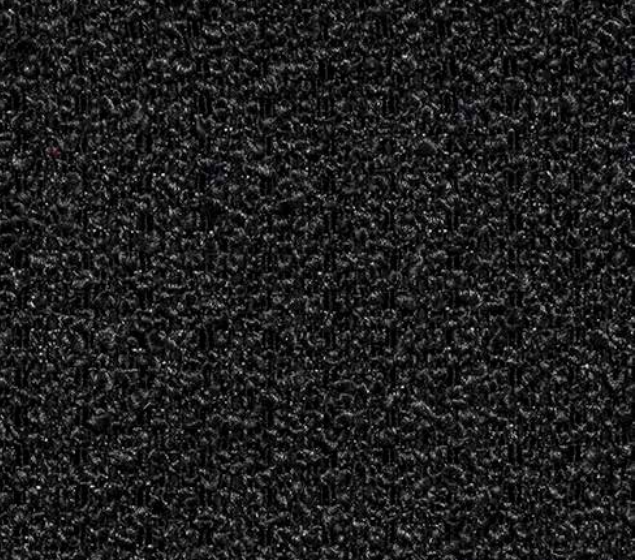
Elkie 829 Parchment LRV 48.9



Elkie 858 Cobble LRV 9.9



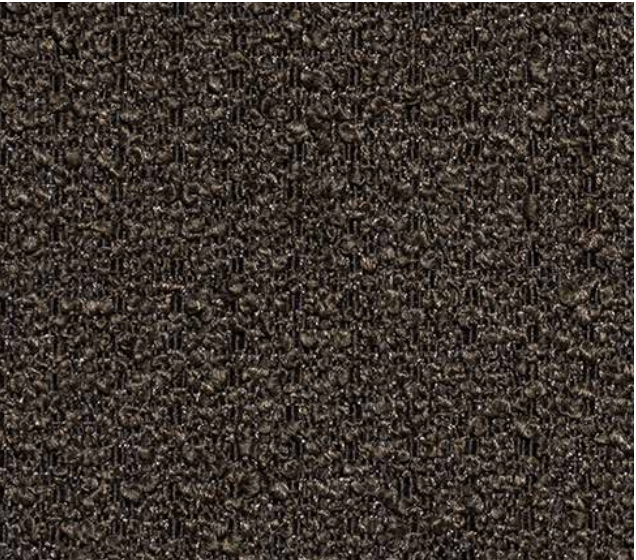
Elkie 823 Chablis LRV 25.6



Elkie 949 Noir LRV 1.3



Elkie 904 Pewter LRV 6.1



Elkie 888 Coffee LRV 6.5